

Instructions for Use

Life Science Kits & Assays



innuDRY Standard PCR MasterMix

1 Product specifications

The innuDRY Standard PCR MasterMix contains all reagents required for routine high throughput PCR amplifications up to 5 kb sized DNA targets

The Master Mix contains an aptamere blocked hot start DNA polymerase, highest quality nucleotides (dATP, dCTP, dGTP, dTTP) and optimal PCR reaction buffer components, thus only the template and PCR primers have to be add. The concentration of $MgCl_2$ in the Master Mix is already suitable. The final reaction volume should be reached with PCR-grade water.

2 Quality data and unit definition

Activity and stability tested by low copy PCR, human DNA contamination and activity of DNase and RNase are not detected. Polymerization activity at 25 °C is not detected.

One unit of enzyme catalyzes the incorporation of 10 nmol of deoxyribonucleotides (dNTP's) into a polynucleotide fraction in 30 minutes at 70 °C.

3 Product and order number

Name	Amount	Order-no.
innuDRY Standard PCR MasterMix	100 rxn	845-AS-2100100
innuDRY Standard PCR MasterMix	200 rxn	845-AS-2100200

4 Storage conditions


The innuDRY Standard PCR MasterMix is delivered at room temperature.

It is recommended to store the lyophilized MasterMix at +4 to +8°C in a fridge.

After resolving store at -22 to -18 °C in a freezer with constant temperature conditions.

When stored as recommended, the MasterMix is stable until the expiration date printed on the label on the kit box.

5 Delivered components

Component	Description	Amount
innuDRY Standard PCR MasterMix	Concentration if dissolved in Resuspension Buffer: 2x Nucleotides (dATP, dCTP, dGTP, dTTP): 0.4 mM each Taq DNA polymerase: 1 Unit per 20 µl PCR reaction volume	Lyophilized pellet
 Resuspension Standard PCR Buffer	Reaction Buffer incl. an appropriate amount of MgCl ₂	1100 µl

6 Safety precautions

The assay shall only be handled by educated personal in a laboratory environment. The compliance with the specified procedure is absolutely mandatory when performing this assay.

Reagents should be stored in their original containers at the indicated temperatures. Do not replace individual components with those from different batches or test assays. Note the indicated expiration dates.

Do not eat, drink or smoke while performing the assay.

Wear protective clothing and safety gloves.

All samples and test materials should be handled and disposed of as infectious material, in accordance with regulatory requirements.

Reagent containers that have not come in contact with potentially infectious material may be disposed of along with ordinary laboratory waste.

Store the reagents used for performing PCR separately from DNA templates and amplification products.

7 Reagent preparation

Steps before using the innuDRY Standard PCR MasterMix:

1. Open the tube caps and pipette 1.0 ml of Resuspension Buffer Probe into the lyophilized innuDRY Standard PCR MasterMix tube.
2. Close the tube cap and gently mix by vortexing to get a homogenous solution. Briefly centrifuge for a few seconds to collect the mixture at the bottom of the tube.
3. Store the ready-to-use Standard PCR MasterMix at -22 to -18 °C.

Setup of the PCR

- Gently vortex and briefly centrifuge the MasterMix after thawing
- Mix following components for 1 reaction

Reagent	Volume (1 rxn)
2x innuDRY Standard PCR MasterMix	10 µl
Forward Primer	0.2 - 1 µM
Reverse Primer	0.2 - 1 µM
Template DNA	1 - 100 ng/µl (max. 1 µg)
PCR-grade H ₂ O	add to a final vol. of 20 µl
Total volume	20 µl

- After pipetting mix the components of the reaction mix by gently vortexing and briefly centrifugation for a few seconds to collect the mixture at the bottom of the tube.
- Reserve plate positions for positive (control DNA) and negative (water or buffer) controls.
- When preparing mixes, always calculate the volume according to the number of reactions that you need plus one extra.

Note: Reaction conditions (incubation temperatures and times, concentrations of template DNA, primers) depend on template and primers used.

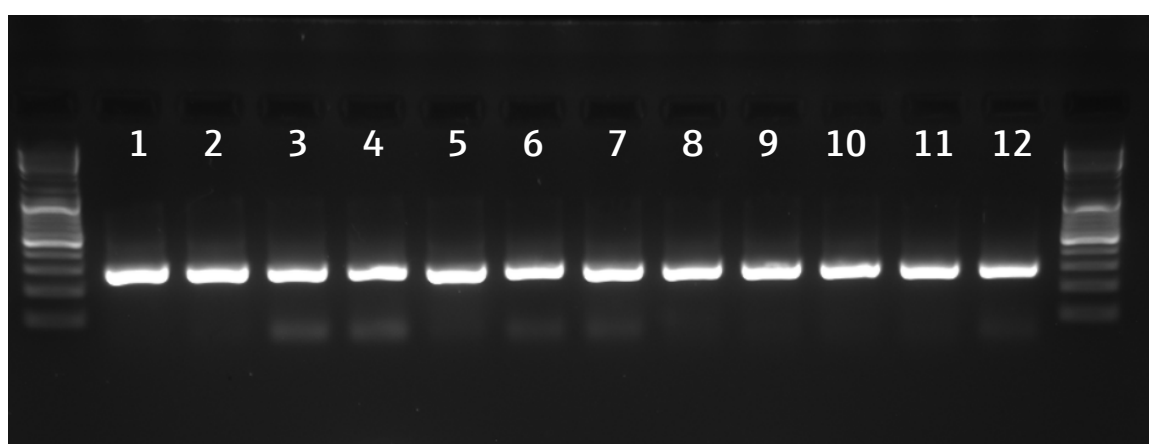
8 PCR conditions

Step	Cycles	Profile	Temperature	Retention time
1	1	Initial denaturation	95 °C	120 s
2	40	Denaturation	95 °C	20 - 40 sec
		Annealing	50 - 68 °C	45 - 120 sec

Note: Annealing temperature should be 2 - 6 °C lower than melting temperature of primer.

9 Application examples

Detection of the amplified products of a DNA fragment of *Salmonella* spacer-region between 16S and 23S RNA genes using the innuDRY Standard PCR MasterMix (lines 1-4), Liquid innuMIX Standard PCR MasterMix (lines 5-8) and fresh mixed in-house PCR chemistry (lines 9-12).



10 Related products

Product	Order Number
innuSTAR 100 bp DNA Ladder Express	845-ST-1010100
innuSTAR 1 kb DNA Ladder Express	845-ST-1020100
6x Loading Dye Bromophenol Blue	845-ST-3010006
6x Loading Dye Orange G	845-ST-4010006
innuMIX Standard PCR MasterMix	845-AS-1700100
innuMIX qPCR MasterMix Probe	845-AS-1200100
innuDRY qPCR MasterMix Probe	845-AS-1900100

Publication No.: HB_AS-2100_e_170817

This documentation describes the state at the time of publishing. It needs not necessarily agree with future versions. Subject to change!

Expression and further use permitted with indication of source. © 2017 Analytik Jena AG,
AJ Innuscreen GmbH

Manufacturer:

AJ Innuscreen GmbH
Robert-Rössle-Strasse 10
13125 Berlin · Germany

Distribution/Publisher:

Analytik Jena AG
Konrad-Zuse-Strasse 1
07745 Jena · Germany

Telefon +49 3641 77 70
Telefax +49 3641 77 9279
info@analytik-jena.com
www.analytik-jena.com